

FASHIONPHILE



FASHIONPHILE

Neiman Marcus | BERGDORF
GOODMAN



ATTAINABLE LUXURY CURATED FOR YOU

On the surface, FASHIONPHILE is about making pre-owned, ultra-luxury goods accessible. Rare pieces? We have them. Your favorite wishlist item for a steal? We've got that, too. We're about guaranteed-authentic Holy Grail products in great condition, and quick buy-outs on pieces you're ready to sell.

But then, FASHIONPHILE is also so much more. It's the idea that what you want, can (and should) be yours. That luxury isn't synonymous with hard-to-get and harder-to-pay-for. That, without a doubt, there's nothing better than the real thing.

When we create sustainable, practical solutions — for even the most luxurious of things — we not only make life better but frankly, more fun.



100% AUTHENTIC, GUARANTEED.

At FASHIONPHILE, we understand the importance of trust. Shopping for pre-owned luxury items isn't easy. The resale industry is plagued by sellers of counterfeit luxury handbags, so it is essential that our experts are skilled in the science of authentication.

Before any item is posted to the FASHIONPHILE website or sold in our Flagships, it is checked by two highly qualified authenticators specializing in specific brand names. Whether it is a handbag, an accessory item, a piece of jewelry, or a watch, the authenticity of every piece is reviewed and inspected to ensure that their details meet the manufacturers' established standards of quality in stamping, stitching, hardware, authenticity stamps, date codes, serial number (where applicable), materials, and craftsmanship.



We stand by our authenticators and the authenticity of every item we sell at FASHIONPHILE. Our expert process not only includes a thorough and detailed examination of an item's authenticity, but we also verify the provenance of every item that comes through our doors and check for any identifiable damage, previous repairs, and odors. These steps collectively ensure that all ultra-luxury items we sell are the real deal. In fact, everything available to shop at FASHIONPHILE has passed our rigorous background check and is verified with our FASHIONPHILE Certificate of Authenticity.



FASHIONPHILE Certificate
of Authenticity



THE FASHIONPHILE LEGACY

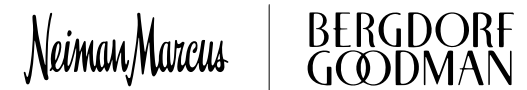
As the very first ultra-luxury re-commerce brand of its kind, FASHIONPHILE is the brainchild of Founder and President, Sarah Davis. Like most of the brands we love best, FASHIONPHILE began in 1999, with little more than a good idea. In 2006, Sarah introduced business partner & CEO Ben Hemminger, who evolved the brand by expanding the collection and presenting it to a larger market. Over 20 years later, FASHIONPHILE is now one of the world’s top resellers of pre-owned luxury and the exclusive re-commerce partner of Neiman Marcus.

In the words of Geoffroy van Raemdonck, CEO of Neiman Marcus Group, “FASHIONPHILE’s hyper-focus on curating high-quality supply and providing best-in-class shopping experiences makes it the ideal partner.”

When Neiman Marcus calls you ideal, you blush and just, well, let it in.



FASHIONPHILE



PROUD PARTNER

Since our partnership in 2019, FASHIONPHILE and Neiman Marcus Group have been pioneering the retail-resale experience. A first-of-its-kind partnership that joins the forces of two leaders in the digital and omnichannel luxury experience to provide a unique circular service. Together, we offer integrated services that have transformed the resale landscape and elevate the luxury retail experience.

Starting in 2023, we have also partnered with Bergdorf Goodman to offer customers circular services by enabling our Personal Shoppers to facilitate the selling of their clients' past luxury investments with FASHIONPHILE in exchange for Bergdorf Goodman gift cards, a unique proposition in the luxury retail landscape.



USING RESALE AS A FORCE FOR GOOD

For over 20 years, we have been committed to accessibility, circularity, and cultivating lasting impact through fashion resale. From day one, we have worked hard to shape FASHIONPHILE and our everyday practices to positively impact our planet, people, and products. Our Mission is to revolutionize luxury fashion by creating a sustainable alternative that not only extends the life cycle of luxury products but also makes them more accessible to a more diverse customer. As a Certified B Corp, we are thrilled to be a part of this global community, using all aspects of the business as a force for good.

What is a B Corp?

When a company is a Certified B Corp, that means they're verified by B Lab to meet the high social and environmental performance standards, transparency, and accountability. At FASHIONPHILE, we're proud to uphold transparency in all aspects of the business, from employee benefits to ways we give back to our community.

FASHIONPHILE PERSONAL SHOPPERS

Here at FASHIONPHILE, our goal is to help make your shopping experience as customized and authentic as possible. A huge part of what makes shopping online possible today is technology. But as great as technology can be, sometimes we need an actual human being to give us some answers. We hear you.

Our Personal Shoppers bring the person in “personal.” They are virtual style experts -- real people -- trained to assist you with any questions or concerns you may have. Among many things, they can help you select the best item at your price point, review hardware and textiles, compare items that you are considering, and even verify important date codes.

FASHIONPHILE Personal Shopping Assistants are available to help with (but not limited to):

- > Finding a bag that fits your needs
- > Looking for a gift for someone else
- > Selecting the best item at your price point
- > Reviewing hardware/ textiles
- > Reviewing measurements
- > Reviewing listed conditions
- > Reviewing date codes
- > Reviewing “Comes With” items

Interested in an item in this catalog?
Contact a Personal Shopper!

Phone: (332) 777-7113
Email: personalshopper@fashionphile.com





LOOKING TO SHOP IN-PERSON?

We have FASHIONPHILE shopping & selling
locations all around the country!



Find a location:
fashionphile.com/locations

FASHIONPHILE'S MOST-LOVED

These are styles our customers can't get enough of... And for good reason! Our most-loved pieces include tried and true accessories that continue to rise above the trends, making them the perfect pieces to invest in.



LOUIS VUITTON

Neverfull

The Neverfull comes in four sizes. The Neverfull BB size is the smallest, then comes the PM. The medium-sized Neverfull is the MM, also known as Moyen Modele, and the largest Neverfull size is the GM.



Scan to shop
all Neverfulls.



CHANEL

Double Flap

From the diamond quilting to the distinguished CC turn-lock inspired by Coco Chanel's childhood, the Chanel Double Flap is a legendary style. We can say without a shadow of a doubt that when it comes to investing in ultra-luxury, adding anything Chanel to your cart is totally low risk.



Scan to shop all
Double Flaps.

FASHIONPHILE

Contact our Personal Shoppers. Call (332) 777-7113 or email personalshopper@fashionphile.com.

14



CARTIER

LOVE Bracelet

Originally designed in 1969, the Cartier LOVE bracelet remains just as irresistible today. Over the years, the Cartier LOVE collection evolved to feature ever-luxurious materials – platinum and 18 karat yellow, white, and pink gold. Cartier offers the timeless bangle in a slimmer design and different cuff variations, as well.



Scan to shop all Love bracelets.



TIFFANY

HardWear Link Bracelet

The Tiffany & Co. HardWear collection is a testament to the brand's daring and contemporary aesthetic. Launched in 2017, this collection draws inspiration from the urban edge and industrial chic of New York City.



Scan to shop all HardWear.



CHANEL

Wallet on Chain (WOC)

Whether you opt for the timeless classic Chanel WOC, the contemporary Chanel 19 WOC, the elegant Chanel Pearl Crush WOC, or even the iconic Timeless CC WOC, the variety of Chanel WOC styles available perfectly embody the essence of crossbody fashion.



Scan to shop all WOCs.



FENDI

Peekaboo

The Fendi Peekaboo is the perfect quiet luxury companion designed by Silvia Venturini Fendi over a decade ago. The Peekaboo boasts a contemporary shape and a draped look when unlocked.



Scan to shop all Peekaboos.



SAINT LAURENT

Kate Satchel

The Saint Laurent Kate Satchel boasts a compact size, making it perfect for everyday use or as a chic evening clutch. The iconic YSL logo is prominently displayed on the front flap, adding a touch of luxury to the design.



Scan to shop all Kate Satchels.



CHRISTIAN DIOR

Saddle Bag

The design of the Saddle's silhouette is inspired by the side of the horse saddle (hence the name), and the hanging "D" mimics a stirrup. To this day, the Saddle bag is one of the brand's most sought-after styles.



Scan to shop all Saddle Bags.



SAINT LAURENT

Lou Camera Bag

The Saint Laurent Lou Camera Bag bag is a timeless and elegant bag that comes in various styles and sizes. Whether you prefer the Baby, Mini, or the original size bag to fit all the essentials, a Saint Laurent Lou Camera Bag bag will surely suit your needs and preferences from the office to happy hour.



Scan to shop all
Lou Camera bags.

LOUIS VUITTON

Monogram Noe

Made in 1932 and designed by Gaston-Louis Vuitton to carry 5 bottles of champagne, this style is one of the original bags to be made for recreational purposes. It didn't take long before this style evolved into an everyday stylish essential. Due to its popularity, the Noe sort of became an 'It' bag purely by coincidence.



Scan to shop all
Monogram Noes.



HERMES

Kelly Bag

When people think of a "Kelly bag," the Hermes Kelly style is what typically comes to mind. Available in both Sellier and Retourne versions, it boasts a trapezoidal silhouette and is a tribute to the original Kelly bag carried by actress and Princess of Monaco, Grace Kelly, after whom it is named.



Scan to shop
all Kelly bags.





CELINE

Classic Box Flap Bag

The Celine Classic Box Flap bag is more than just an “if you know, you know” bag. It is a legendary style that has heightened Phoebe Philo’s career and continues to be a sought-after item – especially amongst devout Philophiles.



CHRISTIAN DIOR

Lady Dior

The Lady Dior bag from Christian Dior, named after Princess Diana, has earned its reputation as a timeless investment piece. The bag’s elegant design, featuring the “cannage” quilted pattern inspired by cane chairs in the Dior atelier and the iconic “Dior” charms, added to the bag’s popularity.



BOTTEGA VENETTA

Cassette Crossbody

The Cassette and its sister style, the Padded Cassette, are signature pieces from the Daniel Lee era at Bottega Venetta. The mix between its pillow-like features and iconic brand signatures are what make the Cassette so innovative and desirable – it’s truly a stand-alone statement accessory.



Scan to shop all
Box Flap bags.



Scan to shop
all Lady Diors.



Scan to shop
all Cassettes.



LOUIS VUITTON

Speedy

The Louis Vuitton Speedy bag borrows inspiration from the iconic Louis Vuitton Keepall and shares a lot of the same design features. Created in 1930, the Speedy bag was the first Louis Vuitton handbag to be made and has become a cult favorite with many versions to choose from.



Scan to shop
all Speedys

CARTIER

Tank Watch

First introduced in 1917, the Tank watch was designed by Louis Cartier himself, drawing inspiration from the armored vehicles he saw during World War I. The Tank watch features a unique rectangular case with a clean, minimalist design that has become a hallmark of the collection.



Scan to shop
all Tanks.



HERMES

Clic Clac H Bracelet

This bracelet opens with a swivel Hermes “H” on the prominent side. Around the band is a strip of enamel inlay. Hermes releases new colors and styles every season so there’s always an updated Clic Clac colorway to covet.



Scan to shop
all H bracelets.





HERMES

Evelyne

The Hermes Evelyn was inspired by the original bag used to carry horse grooming products.



Scan to shop all Evelyn bags.



CHANEL

19

The Chanel 19 will take your breath away with the various materials to choose from, from lambskin and goatskin to tweed and denim.



Scan to shop all Chanel 19s.



LOUIS VUITTON

Pochette Accessories

What began as a humble entry-level style has blossomed into a cultural phenomenon, gaining significant value over time.



Scan to shop all Pochettes.



HERMES

Constance Long To Go Wallet

The Constance Long To Go Wallet is an iconic Hermes accessory known for its timeless design. It can be worn as a shoulder bag, crossbody, or clutch.



Scan to shop all Constance Long To Go wallets.



SAINT LAURENT

Sunset

A sophisticated and timeless style, the Saint Laurent Sunset is a great addition to anyone's handbag collection.



Scan to shop all Sunsets.



GUCCI

Horsebit 1955

The Gucci Horsebit was created in the 1950s representing Gucci's deep-rooted connection to the equestrian sport.



Scan to shop all Horsebit 1955s.



LOUIS VUITTON

Bumbag

Consider the Louis Vuitton Bumbag an ultra-functional, unisex accessory perfect for anyone looking to make a smart investment.



Scan to shop all Bumbags.



LOUIS VUITTON

Eva Clutch

This Louis Vuitton clutch has a zip closure at the top and a gorgeous signature metal plate at the front.



Scan to shop all Eva clutches.



FENDI

Baguette

The iconic Fendi Baguette is a bag that stands beyond its utilitarian purpose and cultural significance. As the saying goes, “It’s not just a bag. It’s a Baguette!” With its ties to the fictional character Carrie Bradshaw, the Fendi Baguette has reached unparalleled fame.



Scan to shop
all Baguettes.



GIVENCHY

Antigona

A stunning structured bag that instantly elevates any outfit. Despite its compact appearance, the Antigona is quite spacious inside and comes in various sizes, styles, and textiles.



Scan to shop
all Antigonas.



CARTIER

Trinity Ring

Fun fact: Cartier became one of the first major jewelers to introduce rose gold jewelry to its customers. The Trinity ring was commissioned by French artist Jean Cocteau, who often sported his creation on his pinkie.



Scan to shop all
Trinity rings.



CELINE

Belt Bag

The Celine Belt Bag is currently available in four sizes: Pico, Nano, Micro, and Mini - the Mini being the largest. Suitable for many different styles and different occasions, the Belt Bag can be worn on the arm using the top handle or over the shoulder with the removable shoulder strap.



Scan to shop
all Belt bags.



TIFFANY

T Wire Bracelet

Introduced in 2014, the Tiffany T collection embraces clean lines and the iconic letter “T” as its central design element. The T motif represents strength, style, and timelessness. The collection features an array of stunning pieces crafted from sterling silver, 18k gold, and often adorned with sparkling diamonds.



Scan to shop all T
Wire bracelets.



DAVID YURMAN

Cable Classics Bracelet

David Yurman’s artistic signature, the Cable bracelet, remains to this day one of the world’s most renowned and beloved jewelry designs since its creation in 1982.



Scan to shop all
Cable Classics.



HERMES

Birkin

“Coveted” would be the word that comes to mind. On a flight to London, Jane Birkin inspired Jean-Louis Dumas (then Hermes chairman) to create the ultimate carryall bag. Its release in 1984 changed the luxury game. The Birkin, a true symbol of luxury and status, reigns supreme in the realm of ultra-luxury. And while they’re often exceptionally hard to get your hands on, FASHIONPHILE has quite the collection of Birkin bags to choose from.



Scan to shop
all Birkin bags.



HERMES

Lindy

The Hermes Lindy was designed by Jean-Paul Gaultier in 2006 and first released during the Hermes Spring-Summer 2007 collection. The Lindy is the epitome of quiet luxury, applauded for its subtle yet impactful design while having a unique placement of handles that no other brand has ever done before.



Scan to shop
all Lindy bags.





LOUIS VUITTON

Capucines

The LV symbol obviously represents the initials of Louis Vuitton but it also decorates various quiet handbag designs within the realm of Louis Vuitton. The Capucines pays homage to Louis Vuitton's first retail store, which opened on Rue Neuve-des-Capucines in Paris in 1854.



Scan to shop
all Capucines.



CHANEL

Gabrielle

Released in 2017, Chanel Gabrielle bags are truly stunning featuring signature quilted patterns, mixed metals, and exciting chain elements. Its versatility and quality are unbeatable. The Chanel Gabrielle comes in Small, Medium, and Large and other styles such as a backpack variation.



Scan to shop all
Gabrielle bags.



TIFFANY

Return to Tiffany Necklace

The Return to Tiffany collection by Tiffany & Co. is an emblematic line of jewelry that pays homage to the brand's rich heritage. Inspired by the iconic key ring tags used by the brand in the early 1960s, this collection was reintroduced in the late 1990s, capturing the nostalgia and timeless elegance associated with the Tiffany name.



Scan to shop all
Return to Tiffany
necklaces.

LOEWE

Puzzle Bag

The Loewe Puzzle Bag carries a certain maturity and refinement that other well-versed admirers are sure to appreciate. Unique, interesting, and understated, the Puzzle bag manages to be both edgy and classic at the same time.



Scan to shop all
Puzzle bags.



LOUIS VUITTON

Felicie Pochette

There's a lot to love about this little Pochette: its detachable chain, beautiful interior in various colors, and undeniable durability. But perhaps everyone's favorite thing about this piece? It includes both a card insert AND a zippered pouch!



Scan to shop all
Felicie Pochettes.



VAN CLEEF & ARPELS

Vintage Alhambra Ring

This famous jewelry house is one of the best in the world and it really can't get more luxurious than this. Their pieces are so wearable and so unique, that you'll always feel like a million bucks. Not to mention, these items maintain their worth and always appreciate in value within the resale market.



Scan to shop all Alhambra rings.



CHANEL

2.55 Reissue

The Chanel Reissue is based on Coco Chanel's original handbag design, the 2.55, featuring the Mademoiselle turn-lock closure. The 2.55 debuted in February 1955. The Reissue came out in 2005, a version recreated by Karl Lagerfeld.



Scan to shop all Reissues.



LOUIS VUITTON

Alma

With a storied past and a diverse selection to choose from, the Louis Vuitton Alma stands as an iconic bag in its own right. Since its inception, the Louis Vuitton Alma bag has marked its presence in the world of fashion. Over the years, the Alma bag has undergone various transformations, all the while maintaining the essence of Louis Vuitton's heritage.



Scan to shop all Almas.



LOUIS VUITTON

Onthego

The ideal companion for travel, work or shopping - the Onthego from Louis Vuitton fits all the everyday essentials and more. Carry it by the top handles, or by the shoulder straps, which can be tucked away inside the bag when you're not using them!



Scan to shop all Onthegos.





SPOTLIGHT ON: CHANEL DOUBLE FLAP

What's more classic than the Chanel Double Flap?

Whether you prefer a creamy yellow Mini Square Flap in lambskin, or fancy yourself more of a classic tweed type, the Chanel Flap offers a textile, size, and color for every style and sensibility. Each color is distinct to the year it came out, so its pedigree remains interminably. Last note: Chanel bags only go up in value, and there's good reason to believe they always will.

The collection of Chanel Flap bags includes sizes ranging from smallest to largest: the Extra Mini (which is now discontinued, but we've got 'em at FASHIONPHILE), the Mini Rectangular, Small, Medium, Jumbo, and Maxi.



CHANEL

Mini Rectangular Flap

The Mini Rectangular embodies that coveted "classic flap" look but on a smaller scale, and they're really popular now – and incredibly hard to get your hands on, of course.



Scan to shop all
Mini Rectangular
Flaps.



CHANEL

Medium Double Flap

Perfect for day to night and everything in between. The Medium size is a top-selling size here and outside of FASHIONPHILE – likely because it's not too big and it's not too small.



Scan to shop all
Medium Double
Flaps.



CHANEL

Maxi Double Flap

If you want to be able to carry all, and I mean ALL your essentials (maybe you need it for going to work), then go bigger. The Jumbo or the Maxi can fit a 10"-13" laptop plus other items, and that might be for you!



Scan to shop
all Maxi &
Jumbo Flaps.



QUIETLY STUNNING

Also known as quiet luxury, these minimalist styles are high-quality and understated, but never boring. Their allure lies in their innate sophistication and unparalleled exclusivity. Let your fashion choices speak volumes without uttering a word.



HERMES

24/24

Inspired by the sleek design of suit jackets, the 24/24 is a compact and lightweight Hermes shoulder bag with a sleek and modern design. The 24/24 features a rigid flap with a soft body and a structured top handle.



Scan to shop
all 24/24 bags.



BOTTEGA VENETA

Padded Chain Cassette Bag

A beautiful balance between structure and fluidity, the chunky chain handle adds an edgy detail to the pristine look of the original Cassette Bag.



Scan to shop all
Cassette bags.





HERMÈS

Garden Party

The Garden Party tote is a soft and spacious design, making it perfect for both casual and dressier occasions.



Scan to shop all
Garden Party bags.



GUCCI

Jackie 1961 Hobo

With its iconic hobo shape and signature piston closure, the Jackie bag has been a staple of the Gucci collection for decades.



Scan to shop all
all Jackies.



CELINE

Triomphe Shoulder Bag

The Celine Triomphe bag is arguably one of Hedi Slimane's best creations. The hardware motif pays tribute to the original logo concept inspired by the Arc-de-Triomphe.



Scan to shop all
Triomphe bags.



LOEWE

Amazona

The Spanish design house was founded by artisans in Madrid, and later named Loewe (pronounced LOH-eh-vay) after an investor, Enrique Loewe Roessberg.



Scan to shop all
Amazona bags.



BOTTEGA VENETA

Arco Tote

The brand's signature Intrecciato weave is bigger and bolder on this luxe tote handcrafted by skilled Italian artisans.



Scan to shop all
all Arco totes.



BURBERRY

Olympia Shoulder Bag

The Olympia bag is a new style featuring a crescent curve or a half-moon shape. The silhouette is a true signature of the house.



Scan to shop all
Olympia bags.



LOUIS VUITTON

NeoNoe

The NeoNoe bucket bag revisits a 1932 design by Gaston-Louis Vuitton. The NeoNoe can be worn as a crossbody or over the shoulder.



Scan to shop all
all NeoNoes.



DELVAUX

Brillant Satchel

Founded in 1829, Delvaux, older than Hermès or Louis Vuitton, maintains its commitment to craftsmanship with their gorgeous accessories.



Scan to shop all
Brillant Satchels.



CARTIER

Ballon Bleu De Cartier Watch

The Ballon De Cartier watch features a perfectly round case with a prominent and playful crown resembling a miniature balloon. Models include the Ballon Bleu and the Ballon Blanc. The Ballon Bleu watch has a distinctive dial with Roman numerals and a date window, adding to its classic and refined appearance for both men and women.



Scan to shop all
Ballon Bleu De
Cartier watches.



BOTTEGA VENETA

The Pouch Clutch

When we find roomy, luxurious, and versatile all in one place (re: in one Pouch) there's only one question left: where can we add to cart?



Scan to shop all
Pouch clutches.



HERMES

Herbag

Designed as a distant cousin to the famed Hermès Kelly, the Herbag not only echoes the timeless appeal of its predecessor but also boasts a distinctive charm of its own.



Scan to shop all
Hermès Herbags.



CHRISTIAN DIOR

Bobby Bag

Named after Christian Dior's beloved pet, the Bobby bag is reminiscent of a classic messenger bag, but with an updated elegant flair. The Bobby features adjustable shoulder straps and military-inspired buckles alongside the CD logo.



Scan to shop all
Bobby bags.



FENDI

Fendi First

A simple yet elegant design, the Fendi First has quickly become a classic. You can wear the Fendi First by hand as a clutch or on the shoulder, thanks to its detachable shoulder strap.



Scan to shop all Fendi Firsts.



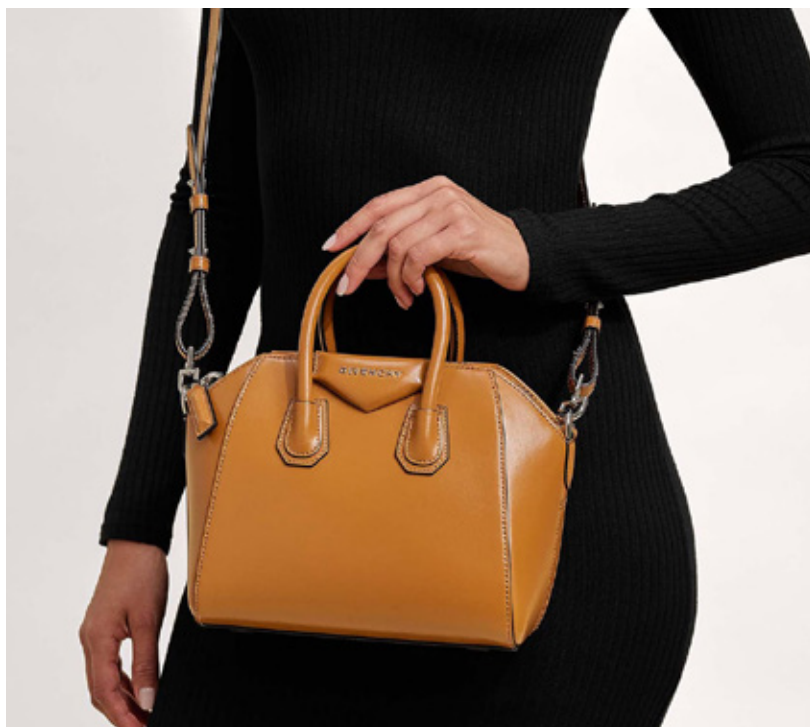
GIVENCHY

Antigona

Launched in 2010, and an instant classic in the Givenchy bag collection, the Givenchy Antigona takes its name from the Greek mythological name of “Antigone.”



Scan to shop all Antigonas.



CHLOE

Tess Bag

Adorned with Chloe’s iconic hanging ring, the Tess bag is a timeless design with a vintage feel.



Scan to shop all Tess bags.





BOTTEGA VENETA

Jodie

The Jodie bag is a great contender if you're looking to shop for a Bottega Veneta bag that screams impeccable craftsmanship and luxurious appeal. If you're looking to find your perfectly compact statement accessory, the Jodie bag offers an array of styles, sizes, and iconic colors to suit every fashion enthusiast's taste.



Scan to shop
all Jodies.



BOTTEGA VENETA

Double Knot Bag

Understated and chic, the Double Knot bag gets its name from the knots that accent each end of the bag.



Scan to shop
all Knot bags.



BOTTEGA VENETA

Loop Camera Bag

Bottega Veneta's world-renowned craftsmanship is showcased on this bag, which can be worn as a crossbody or over the shoulder.



Scan to shop
all Loop bags.



BOTTEGA VENETA

The Belt Cassette Bag

Go hands-free with this stylish belt bag from Bottega Veneta.



Scan to
shop all Belt
Cassette bags.



BOTTEGA VENETA

Lido Mule Sandals

The Lido Mule quickly became a cult favorite. Its instantly recognizable square toe and comfortable insole makes it a staple in everyone's shoe closet.



Scan to shop
all Lido mules.



HERMES

Kelly

This bag pays homage to the original Kelly bag carried by the Princess of Monaco, Grace Kelly, with whom the bag is named after. The Kelly comes in the following sizes from biggest to smallest: 35, 32, 28, 25, and 20 (also known as the mini).



Scan to shop
all Kelly bags.



BOTTEGA VENETA

Intrecciato Arco

A luxurious tote bag in the unique and elegant Intrecciato motif from Bottega Veneta.



Scan to shop
all Arco bags.



LOEWE

Luna Bag

A stunning half moon hobo bag meticulously crafted with a sculptural silhouette and a distinct curved double lip closure.



Scan to shop
all Luna bags.



HERMES

Oran Sandals

The Oran sandals are perfect for those looking to invest in an "everyday sandal" – a pair that you can wear to the office, dinners, errands, and vacations alike. There are so many textiles to choose from: denim, ostrich, epsom, goatskin, box calfskin, and more.



Scan to shop all
Oran sandals.



CELINE

Phantom Luggage

The Phantom Luggage is an easy grab-and-go everyday tote. The distinctive wings can be worn extended or inside the bag for a more compact fit.



Scan to shop all
Phantom Luggages.



STELLA MCCARTNEY

Falabella Tote

This chic tote is crafted of vegan faux leather. While other brands are evolving into more earth-friendly methods, Stella McCartney has been spearheading the effort for years, and has never used leather or fur in any of her collections.



Scan to shop all
Falabella totes.



PRADA

Cuir Top Handle Tote

This bold yet timeless tote from Prada makes an elegant statement for everyday wear.



Scan to shop
all Cuir totes.



HERMES

Picotin

First introduced to the world in 2002, the Picotin was initially only available in size 18 (also known as the PM, or Petite Model). Throughout the years, with the growing popularity of the Picotin, Hermes introduced more sizes including 22, 26, and 31.



Scan to shop all
Picotin bags.



CARTIER

Panthere Watch

The Cartier Panthere is one of the most iconic ladies' watches. The panther for Cartier has become the symbol of the brand, inspired by a watercolor painting of a woman with a panther by George Barbier.



Scan to shop all
Panthere watches.



BOTTEGA VENETA

Jodie

The Jodie bag stands out as an exceptional choice for those seeking a Bottega Veneta bag that offers a delightful array of style variations, sizes, and iconic colors as well as materials and fun textures to suit every taste.



Scan to shop
all Jodies.



CHANEL

Cap Toe CC Slingback Pumps

These renowned cap toe slingback pumps effortlessly elevate (literally) your look, boasting a heel measurement of approximately 2.6 inches, all while ensuring a hassle-free stroll.



Scan to shop all
Chanel slingbacks.

BULGARI

B.Zero1 Ring

The B.Zero1 collection was conceived and created by Bulgari in 1999 to welcome the year 2000 and expresses the strength that lies in every new beginning.



Scan to shop all
B.Zero1 rings.



CHLOE

Drew Shoulder Bag

Known for free-spirited femininity, the Parisian-based Chloe offers the "It" bag, Drew, in many versions. A perfect accessory for a day out, the Drew comes in a variety of luxurious textiles, even in some eye-catching metallic hues.



Scan to shop
all Drew bags.



SPOTLIGHT ON: LOUIS VUITTON KEEPALL

The Louis Vuitton Keepall stands out in the realm of travel bags as the epitome of luxury and sophistication. As one of the most recognizable travel carryalls today, the Keepall can “keep it all” in while boasting a wide range of sizes, styles, materials, and colors to suit every traveler’s unique taste. The Louis Vuitton Keepall’s enduring and timeless elegance makes it the ultimate symbol of sophistication in the world of travel and beyond – and all our closets are craving one!

The Louis Vuitton Keepall comes in four sizes: 45, 50, 55, and 60 and these numbers are indicative of the length of the Keepall in centimeters.

Shown in size 45.



Scan to shop
all Keepalls.



VAN CLEEF & ARPELS ALHAMBRA COLLECTION

The Alhambra collection gets its name from the Alhambra palace in Granada, Spain. The Alhambra collection, specifically, symbolizes good fortune. And with that good fortune, you can count on top quality craftsmanship with VCA. The Alhambra collection features unique materials and some of the most valuable colored gemstones in the world. Sourced materials include turquoise, diamonds, rhodonite, gold, onyx, carnelian, malachite, lapis lazuli, and mother of pearl.



VAN CLEEF & ARPELS

10 Motifs Vintage Alhambra Necklace

There are many types of stones that Van Cleef & Arpels uses in their Alhambra collection. But when it comes to diamonds, the Maison Van Cleef & Arpels only uses the highest quality natural diamonds.



Scan to shop all
Alhambra necklaces.



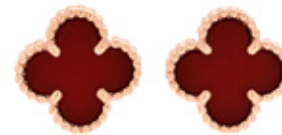
VAN CLEEF & ARPELS

Vintage Alhambra Pendant Necklace

Whether it's the brilliance of diamonds, the vibrant hues of sapphires, or the earthy tones of malachite and rhodonite, shopping for Van Cleef & Arpels jewelry offers an unparalleled selection of gemstones.



Scan to shop all
Alhambra necklaces.



VAN CLEEF & ARPELS

Sweet Alhambra Earrings

Whether you're lounging poolside or parading the city streets, the Alhambra collection conforms with just about any lifestyle and look.



Scan to shop all
Alhambra earrings.



VAN CLEEF & ARPELS

20 Motifs Vintage Alhambra Necklace

The Alhambra collection features unique materials and some of the most valuable colored gemstones in the world. Van Cleef & Arpels stopped frequently using the turquoise-stone Alhambra in 2002, making this necklace extremely rare and highly coveted.





MINI BAG MANIA

Must-have bags in miniature form.

Mini bags are proof that you don't need a lot of space to pack a whole lot of style. Downsize this season with our range of small but mighty bags.



LOUIS VUITTON

Twist PM

The Twist design, characterized by its innovative LV twist-lock closure, exudes modern sophistication. When crafted in Epi leather, the Twist bag stands out with its rich texture and refined structure.



Scan to shop
all Twists.



CHANEL

CC In Love Heart Clutch With Chain

Despite its unique shape, the Chanel CC In Love Heart Bag makes for a great style to wear as a crossbody bag. Imagine all the sweet dinners and dates this gem can accompany you on with effort and ease.



Scan to shop all In
Love Heart bags.





FENDI

Mini Baguette

The Baguette became an instant sensation and an “It bag” of the early 2000s after being carried by Carrie Bradshaw on “Sex and the City.”



Scan to shop all Baguettes.



LOUIS VUITTON

Mini Speedy

Long before the Nano Speedy, the Mini Sac HL Speedy was a coveted bag, now rare and only available pre-loved.



Scan to shop all Mini Speedys.



BALENCIAGA

Nano City Crossbody

The original City bag, initially a prototype gifted to runway models like Kate Moss, gained huge popularity and continues to be popular today.



Scan to shop all Mini City bags.



PRADA

Mini Re-Edition 2005 Bag

Prada is ultra-luxurious and equally iconic. Particularly its Tessuto nylon. This material, even decades after its inception, is in high demand.



Scan to shop all Mini Re-Editions.



FENDI

Mini Cookie Hobo Bag

First came the Baguette, then came the Cookie. This unique bag draws inspiration from the shape of a, you guessed it, cookie!



Scan to shop all Cookie bags.



CHRISTIAN DIOR

Micro Lady Dior

Since the bag's debut in 1995, the Lady Dior bag has evolved while keeping its signature look intact.



Scan to shop all Micro Lady Diors.



TELFAR

Small Shopping Bag

This particular “It” bag is the entry point to the Telfar brand.



Scan to shop all Shopping bags.



GUCCI

Super Mini GG Marmont Shoulder Bag

All Marmont bags feature the iconic GG logo, inspired by a 1970s belt buckle, symbolizing Gucci's modern design approach.



Scan to shop all Mini Marmont bags.



HERMES

Mini Lindy 20

Known for its distinctive placement of the handles, the Hermes Lindy pays tribute to the dance from which it takes its name, the Lindy Hop.



Scan to shop all
Mini Lindy bags.



HERMES

Constance 18

The Constance is an iconic Hermes bag known for its sleek and timeless design and can be worn as a shoulder or crossbody bag.



Scan to shop all
Constance 18 bags.



HERMES

Micro Picotin

Compared to the mini-size model, the Micro Picotin Lock is a bit more compact than other bags, but its wide gusset makes it easy to use. The minimalist, practical design of this Hermes handbag was modeled after horse feeding buckets.



Scan to shop all
Micro Picotin bags.



HERMES

Mini Kelly 20

Released in 2016, the Hermes Mini Kelly bag may be tiny in size, but several features and coveted colorways make the Hermes Mini Kelly an unbeatable investment.



Scan to shop all
Mini Kelly bags.



CHANEL

Mini Rectangular Flap

This bag effortlessly combines functionality and sophistication, featuring a compact design with an adjustable chain strap that allows for convenient hands-free wear. From day to night, the versatility and style of Chanel bags make them an absolute must-have for any fashion enthusiast seeking a chic and practical crossbody option.



Scan to shop all
Mini Rectangular
Flaps.



PRADA

Symbole Micro Tote

The Prada Symbole tote is a new style that was released during the Summer of 2022. The bag comes with a clochette, and features a unique triptych pattern symbolic of Prada.



Scan to shop all
Symbole Micro
totes.



MIU MIU

Mini Wander Hobo

The anatomy of the Miu Miu Wander bag draws keen attention to detail. The bag's distinctive hobo shape blends "retro inspirations and contemporary elegance," and the Wander bag is the "new synonym of modern femininity," according to Miu Miu.



Scan to shop
all Mini Wander
bags.



LOUIS VUITTON

Mini Papillon

Originally designed in 1966, the house's historic Papillon bag is available in several different sizes. The French word "Papillon" means butterfly, which inspired the design. The shape of the bag is circular, representing the body of a butterfly, with the handles representing the wings.



Scan to shop all
Mini Papillons.



CHANEL

Small Boy Bag

The Chanel Boy bag has a fascinating history deeply intertwined with Coco Chanel's life. The bag was believed to be named after her lover, Boy Capel, and was inspired by a cartridge bag as well as Boy Capel's love of hunting.



Scan to shop all
Small Boy bags.



FENDI

Mini By The Way Bag

Chic and functional. Initially released in 2014, the By The Way has become a staple in Fendi's line of bags.



Scan to shop
all Mini By The
Way bags.



GUCCI

Mini Dionysus Shoulder Bag

Named after a Greek god of wine, Dionysus, this style's defining curved tiger-head hardware takes center stage.



Scan to shop all
Mini Dionysus
bags.





LOUIS VUITTON

Palm Springs Backpack Mini

The Louis Vuitton Mini Palm Springs backpack is not only loved for its miniature size but also for its versatility, too. It can be worn in various ways, from a traditional backpack to a top handle, shoulder bag, or crossbody.



Scan to shop
all Palm Spring
backpack minis.



77



WARDROBE ESSENTIALS: TOTE BAGS

Tote bags are perfectly stylish and functional. They're great for work, school, shopping, traveling, and so much more. We rounded up different tote bag styles that we love from some of our top brands so you can find the perfect one that fits your needs.



LOUIS VUITTON

Neverfull

Introduced in 2007, the Neverfull has been thoughtfully designed to fulfill your daily needs. From the beach and the office, to the countryside and the city, the Neverfull can withstand any environment while looking chic.



Scan to shop all Neverfulls.



FENDI

Sunshine Shopper Tote

This is a stylish and structured tote with incredible craftsmanship from Fendi.



Scan to shop all Sunshine Shopper totes.



TELFAR

Shopping Bag

The Telfar Shopping Bag is a solid handbag choice that is designed to meet your everyday needs. The unique colors are, arguably, what make Telfar "drops" a viral sensation.



Scan to shop all Shopping bags.





CHANEL

Grand Shopping Tote (GST)

Discontinued in 2015, the Chanel GST is particularly popular with avid collectors due to its rarity and potential for increased value.



Scan to shop all GST totes.



CHANEL

Chanel 22

With its multitude of unique features - spacious, chain straps, and remarkable craftsmanship - the Chanel 22 bag truly stands out from the crowd.



Scan to shop all Chanel 22 bags.



VALENTINO GARAVANI

Rockstud Shoulder Tote

The Rockstud collection is one of the most recognizable and popular collections from Valentino Garavani.



Scan to shop all Rockstud totes.



CELINE

Belt Cabas Phantom

An easy grab-and-go everyday tote for any season. Celine is known for its minimalist and timeless designs, and this bag is the proof.



Scan to shop all Phantom bags.



SAINT LAURENT

Rive Gauche Tote

Perfect for everyday, the Rive Gauche is light but durable. Spacious enough for all your essentials, this tote would also make a perfect travel bag.



Scan to shop all Rive Gauche totes.



PRADA

Galleria Double Zip Tote

Named after the Galleria Vittorio Emanuele II shopping arcade in Milan, the Galleria is considered a piece of Prada's heritage.



Scan to shop all Galleria bags.



HERMES

Garden Party

The Hermès Garden Party was first released in 1964. Understatedly chic, the Garden Party tote is a fantastic bag for shopping, work and day-to-day traveling.



Scan to shop all Garden Party totes.



MARC JACOBS

The Tote Bag

Since debuting in 2019, The Tote Bag by Marc Jacobs has consistently blended functionality with fashion, staying true to the brand's design philosophy.



Scan to shop all of The Tote Bags.



GOYARD

Saint Louis

This tote from Goyard is the ultimate carryall for all your essentials from work to weekend adventures. The PM is slightly smaller than the GM. The GM size is a great travel bag, and the PM size is a great everyday errand bag. The largest size, the XXL, also comes with strong leather shoulder straps. Whatever size you choose, the Saint Louis feels elevated and elegant while still being practical.



GOYARD

Saint Louis PM

Goyard's classic Goyardine print is one of the most recognizable patterns in luxury fashion. The distinctive chevron pattern printed on coated fabric symbolizes the Goyard family's history as log-drivers.



GOYARD

Saint Louis GM

The Goyardine print has become an iconic symbol of the brand's heritage and commitment to quality, making it a must-have for any luxury fashion aficionado.



GOYARD

Saint Louis XXL

Goyard's exquisite colors and prints, integral to its brand identity since 1853, appeal to fashion enthusiasts seeking variety, practicality, and exclusivity.



Scan to shop all Saint Louis PM totes.



Scan to shop all Saint Louis GM totes.



Scan to shop all Saint Louis totes.



LOUIS VUITTON

Artsy

The Artsy embodies understated bohemian style. While the bag is beloved for its slouchy appearance, it actually holds shape incredibly well.



Scan to shop
all Artsy bags.



LOUIS VUITTON

Onthego

The Onthego bag was introduced in the brand's Spring/Summer 2019 collection. An instant hit, this tote is structured, spacious, and versatile.



Scan to shop all
Onthego bags.



SAINT LAURENT

Niki Shopper Tote

The Saint Laurent Niki bag is an iconic style that comes in various sizes and styles. Created by Antony Vacarello as a follow-up to the Loulou bag, the Saint Laurent Niki collection rapidly attained cult status since its 2018 debut.



Scan to shop all Niki bags.



CHLOE

Woody Ribbon Tote

The Woody Tote is an ideal bag for all seasons, combining practicality and style while offering a unique twist on the traditional tote bag.



Scan to shop all Woody totes.



CELINE

Phantom Luggage

Introduced in 2011 by creative director Phoebe Philo, the Luggage quickly garnered a cult following.



Scan to shop all Phantom Luggage bags.



PRADA

Cuir Double Handle Tote

A classic and graceful shape that harmoniously merges style and utility, bridging the gap between traditional and contemporary design.



Scan to shop all Cuir totes.



GUCCI

Ophidia Shopping Tote

A beautiful accessory that combines the brand's classic design elements with modern aesthetics. Durable yet lightweight and low maintenance, the Ophidia Shopping Tote is perfect for any occasion.



Scan to shop all Ophidia totes.



FENDI

Peekaboo

Discreet and practically logoless, the Peekaboo is a timeless classic from Fendi. Since its launch, the Peekaboo has been reimagined in almost every material you can think of - from PVC to shearling.



Scan to shop all Peekaboos.



THE DIOR BOOK TOTE

The perfect travel companion.



CHRISTIAN DIOR

Medium Book Tote

The Medium Book Tote is without a doubt the chicest travel companion and a great tote for new moms and beyond. Pst, can you think of a bag more perfect than a Book Tote to carry all your books in?



Scan to shop all
Medium Book Totes.



CHRISTIAN DIOR

Mini Book Tote

The Book Tote is truly iconic and beloved by so many for its artistry, quality, and versatility. This “take anywhere” style elevates the traditional tote bag silhouette while incorporating intricate embroidery techniques perfected by only the best craftsmen.



Scan to shop all
Mini Book Totes.



CHRISTIAN DIOR

Small Book Tote

The value of a Christian Dior Book Tote can be justified knowing that in order to construct an original Book Tote, it takes more than 24 hours and over a million stitches depending on the pattern.



Scan to shop all
Small Book Totes.



CHRISTIAN DIOR

Large Book Tote

Dior says it best, describing the Dior Book Tote as, “the embodiment of casual elegance.” Tote around the spacious yet streamlined bag in-hand or go the hands-free route, wearing it over the shoulder. It’s available in embroidered canvas and many leather options.



Scan to shop all
Large Book Totes.



SAINT LAURENT

Maxi Icare Shopping Tote

The Saint Laurent Icare Maxi Shopping Tote is, quite frankly, ultra-luxury to the max. An oversized gem of a gem and, well, it's the bag everyone is talking about these days.

A bag that can handle the weight of your day-to-day needs. Spotted on the glistening shoulders of A-listers like Hailey Bieber, Zoe Kravitz, Sydney Sweeney, and Rosie Huntington Whiteley to name a few. Alas, a chic “do-it-all” contender we never knew we needed.



Scan to shop all
Maxi Icare totes.



CHANEL

Deauville Tote

This stylish handbag is available in a variety of textiles including leather, canvas, denim, boucle, and mixed fibers. It features rolled leather top handles, a fabric top trim, and chain shoulder straps. The top opens to a matching fabric interior with a removable pouch, zipper, and patch pockets.

The Chanel Deauville tote bag comes in several sizes. From smallest to largest, you can shop the Chanel Deauville tote in Mini, Small, New Small, Medium, and Large. Not only are there various Chanel Deauville tote sizes to choose from, but you can wear this style in multiple ways, making it a great bag for any adventure.



Scan to shop all
Deauville totes.



LUXE TIMEPIECES

Watches today have become not only a tool we all depend on but an expression of personality and taste. There's more than meets the eye with luxury watches. More than just telling time; it's how it tells time. From classic fashion watches to innovative and technically advanced timepieces, there is a wide range of options to suit every taste and style.



ROLEX

Oyster Perpetual Datejust Watch

Known by Rolex as “the watch for the dates to remember,” the Rolex Datejust was created in 1945 and symbolizes Rolex’s definition of elegance. It is known as the first self-winding waterproof chronometer wristwatch to feature a window displaying the date (hence the name).



Scan to shop
all Datejusts.



BVLGARI

Serpenti Double Spiral Quartz Watch

Serpenti watches are renowned for their coiled snake-like bracelets that wrap around the wrist, doubling as jewelry.



Scan to shop all
Serpenti watches.







AUDEMARS PIGUET

Royal Oak Day-Date Automatic Watch

The Royal Oak, which made its debut in 1972, became an icon as the first stainless steel watch within the luxury market. Audemars Piguet prides itself on tradition, creating watches by hand, always honoring excellence, and respecting their heritage.



Scan to shop all
Royal Oaks.



HERMÈS

Faubourg Quartz Watch

Classy and petite, the Faubourg watch is named after Rue du Faubourg Saint-Honoré, the Parisian street where the Hermès Flagship is located.



Scan to shop all
Faubourg watches.



HERMÈS

Heure H Hour Double Tour Quartz Watch

Heure H watch cases are skillfully fashioned from stainless steel. The leather tour straps on Hermès Heure H watches are interchangeable and can be removed, allowing you to transform your watch with new materials and colors.



Scan to shop all
Heure H watches.



CARTIER

Panthere Quartz Watch

The Cartier Panthere is one of the most iconic ladies' watches. The panther for Cartier has become the symbol of the brand, inspired by a watercolor painting of a woman with a panther by George Barbier. The first "Panther" piece was made in 1914.



Shop all Panthere
watches.



ROLEX

Oyster Perpetual Submariner Date Watch

The Rolex Submariner watch was launched in 1953 and is known as the first divers' wristwatch. It is waterproof to a depth of 1,000 feet. It is characterized by a graduated rotatable bezel, a luminescent display, and large hands and hour markers for optimum performance and visibility underwater.



Scan to shop all
Submariners.



CHANEL

J12 Watch

Chanel's J12, a pioneer in ceramic watches, is scratch-proof, hypoallergenic, temperature-adaptive, and six times stronger than steel.



Scan to shop all J12 watches



FRANCK MULLER

Vanguard Quartz Watch

With its distinct design, the Vanguard watch from Franck Muller uniquely contours to the wrist.



Scan to shop all Vanguard watches.



AUDEMARS PIGUET

Royal Oak Quartz Watch

Introduced in 1972, this style is a horological masterpiece and one of the most sought-after models designed by famed watch designer Gerald Genta.



Scan to shop all Royal Oaks.



ROLEX

Cosmograph Daytona

Launched in 1963, the Rolex Cosmograph Daytona has become an icon and is linked to the famous Daytona racetrack and racecar profession.



Scan to shop all Daytonas.



OMEGA

Constellation 95 Quartz Watch

This beautiful timepiece is very lightweight, making it extremely comfortable to wear.



Scan to shop all Constellation 95 watches.



PATEK PHILIPPE

Twenty-4 Quartz Watch

The Twenty-4 Quartz Watch design is classy and chic all at the same time. It's sporty yet elegant and very easy to wear.



Scan to shop all Twenty-4 watches.



CARTIER

Tank Watch

First introduced in 1917, the Tank watch was designed by Louis Cartier himself, drawing inspiration from the armored vehicles he saw during WWI.



Scan to shop all Tanks.



HUBLLOT

Big Bang Automatic Watch

When the Big Bang was introduced in 2005, a not so subtle combination of titanium, ceramic, and rubber, it was an instant hit.



Scan to shop all Big Bang watches.



FOR THE LOGO LOVER

Monogram-centric accessories for the logophile in all of us.



CHANEL

CC Filigree Vanity Case

When it comes to styling Chanel Vanity Cases, they tend to fall on the longer side when worn as a shoulder bag. However, when worn across the torso, Vanity Cases are ideal for crossbody wear, and we can't recommend the Chanel Filigree Vanity Case enough!



GUCCI

Monogram Jackie 1961 Hobo

The Gucci GG Supreme Monogram pattern is a modern interpretation of the classic GG monogram. It features the same two interlocking Gs, but with a more pronounced texture and a crisp brown-beige color scheme.



CHANEL

Chanel Earrings

Chanel earrings typically feature the brand's signature "CC"s, like every logo-lover's dream!



Scan to shop all Vanity Cases.



Scan to shop all GG Supreme Monogram.



Scan to shop all Chanel earrings.



VALENTINO GARAVANI

Loco Shoulder Bag

Valentino Garavani's Loco shoulder bag is skillfully crafted of rich leather from Italy and highlighted by the brand's signature V-logo hardware that adorns the front.



Scan to shop
all Loco bags.



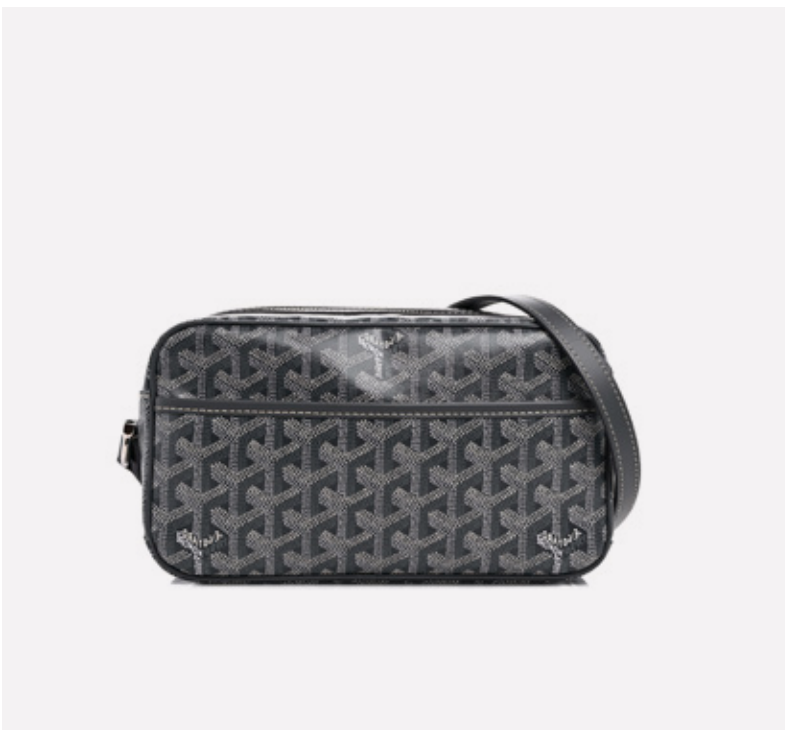
GOYARD

Sac Cap

This stylish crossbody bag is the ideal urban companion for organizing essentials while keeping them close at hand.



Scan to shop
all Sac Caps.



CHRISTIAN DIOR

Oblique Saddle Belt Bag

This Dior belt bag is truly a blend of style and function to a T! If you're not in need of the belt strap, the Christian Dior Belt Bag can be transformed into a small clutch.



Scan to shop all
Saddle Belt Bags.





LOUIS VUITTON COUSSIN

The Louis Vuitton Coussin bag stands out for its unique anatomical features. This bag is a testament to the brand's dedication to innovation, combining functionality with fashion in a way that only Louis Vuitton can. From its quilted construction and rounded edges to its plush, cloud-like silhouette, the Coussin bag is a true work of art.



LOUIS VUITTON COUSSIN

The Louis Vuitton Monogram Coussin is available in Pochette, BB, PM, and MM sizes, catering to different needs from a compact clutch to a spacious everyday bag. The Pochette is the smallest, while the MM is the largest, suitable for carrying more than just essentials.



LOUIS VUITTON

Coussin BB

The Louis Vuitton Monogram Coussin offers an impressive range of versatile styling options, including wearing it as a clutch, a shoulder bag, a crossbody, or even transforming the chunky chain strap into a statement necklace.



Scan to shop all
Coussin BB bags.



LOUIS VUITTON

Coussin PM

The Louis Vuitton Monogram Coussin is instantly recognized for its slouchy, pillow-like accordion silhouette. With a removable strap and chain detail, the Coussin is the perfect day-to-night bag.



Scan to shop all
Coussin PM bags.





GOYARD

Saigon

The name is synonymous with venerable traditions that date back to its trunk-making days. Years after Francois Goyard established his Maison, he began fulfilling custom handbag orders. One particular customer commissioned him to create a trapezoid-shaped bag to surprise his wife. And since then, the Saigon was born.



Scan to shop
all Saigons.



117

GUCCI

Horsebit 1955 Shoulder Bag

The horsebit emblem made its debut on shoes (think Horsebit loafers) in 1953 and quickly expanded into their handbag category. In the year of 1955, the first Gucci bag known as the Horsebit 1955 shoulder bag, incorporated the horsebit design.



Scan to shop all
Horsebit 1955 bags.

CHANEL

Coco Handle Flap

Since the style's debut in 2017, the Coco Handle Flap continues to be a beloved trapezoid-shaped bag featuring the iconic interlocking CC closure.



Scan to shop all
Coco Handle flaps.



BALENCIAGA

X GUCCI Collaboration

Tradition with a twist. Known as “The Hacker Project,” this Gucci and Balenciaga collab merged signature silhouettes and monograms from both brands and reimagined them in new and unique ways, while still keeping true to the aesthetics of both houses.



Scan to shop all
Balenciaga x Gucci.



118



PRADA

Re-Edition 2000 Bag

So adorably 2000s and so unapologetically bold. Since early aughts fashion is so influential, in 2019 Prada brought back their iconic Tessuto nylon shoulder bags, known as Re-Editions. These are based on the 2000 and 2005 styles and were met with enormous fanfare.



Scan to shop all
Prada Nylons.



CHANEL

Camera Case

The Camera Case was first released in the 90s, though it was re-released after a brief hiatus from the brand in 2013 with only subtle design variations on the original shape.



Scan to shop all
Camera Cases.



FENDI

Logo Wallet On Chain

Classic Fendi structure and deliciously monogrammed, this piece offers an ultra-luxury look that's almost definitely going to last.



Scan to shop all
Wallet On Chains.



GIVENCHY

Moon Cut Out Shoulder Bag

Givenchy's Moon Cut Out bag is designed in a flattering curved silhouette.



Scan to shop all
Moon Cut Out bags.



LOUIS VUITTON

Reversible Belt

The bold style and stunning detailing of this Louis Vuitton belt makes it a fabulous fashion accessory. Dress up any outfit with this timeless accessory.



Scan to shop all
Louis Vuitton belts.



CHRISTIAN DIOR

Caro Bag

The Dior Caro bag exemplifies Dior's commitment to craftsmanship. The cannage pattern demands an impressive 18,000 stitches per bag, meticulously crafted by the house's artisans in Italy.



Scan to shop
all Caro bags.



CHANEL

CC Belt

A great belt has the power to transform outfits. Worn with a dress or a t-shirt and jeans, a Chanel belt will add a luxurious statement to any outfit.



Scan to shop all
Chanel belts.



CHRISTIAN DIOR

Montaigne Flap Bag

Designed by Dior's creative director, Maria Grazia Chiuri, the 30 Montaigne is destined to be a classic. Inspired by uniforms, the 30 Montaigne Flap may be worn as a crossbody, shoulder bag, or clutch.



Scan to shop all
Montaigne bags.



LOUIS VUITTON

Monogram Cosmetic Pouch

A classic that is definitely our must-have! Can be used as a cosmetic pouch or as a clutch.



Scan to shop all
Louis Vuitton
cosmetic pouches.



GUCCI

Soho Disco Bag

Since its debut in 2012, the Gucci Soho Disco bag has become one of Gucci's hottest bags ever. Although recently discontinued, the Gucci Soho bag lives on thanks to resale!



Scan to shop
all Disco bags.



125

BALENCIAGA

Hourglass Top Handle Bag

Ultra-structured, and available in various sizes and textiles, there is a Balenciaga Hourglass Top Handle Bag for any taste and style.



Scan to shop all
Hourglass bags.

SAINT LAURENT

Loulou Satchel

One of Saint Laurent's most known handbags is the Loulou bag, a silhouette with undeniable staying power and versatility. The collection of Saint Laurent Loulou styles honors Yves Saint Laurent's muse and dear friend, Loulou de la Falaise.



Scan to shop all
Loulou bags.



GUCCI

Diana Tote Bag

The Gucci Diana Bag got its name from the one and only Princess Diana. When Gucci first launched this iconic bamboo handled handbag in the early 90s, it became one of Princess Diana's favorite totes.



Scan to shop
all Diana bags.





CLUTCH & EVENING BAGS

Ultra-luxury bags for when you need to carry just the essentials for those special occasions.



CHANEL

Small Double Flap

The size is just big enough to fit all your essentials inside, making it functional for everyday wear as a crossbody but also keeps it small enough so it can go with evening looks when worn on the shoulder.



Scan to shop all
Small Double Flaps.



VALENTINO GARAVANI

Roman Stud Shoulder Bag

Drawing inspiration from Italian architecture, this signature Valentino Garavani design reimagines the iconic Rockstud on a grander scale. The Roman Stud, an oversized iteration of the original motif, unveils a new chapter in the brand's narrative.



Scan to shop all
Roman Stud bags.





BOTTEGA VENETA

Knot Clutch

This stylish clutch from Bottega Veneta is crafted in the iconic Intrecciato weave and finished with a metal faux top knot closure.



Scan to shop all Knot clutches.



HERMES

Kelly Wallet To Go

The Hermes Kelly Wallet To Go comes in many iconic Hermes leathers and can be worn as a clutch, as a crossbody, or as a shoulder bag using the accompanying strap.



Scan to shop all Kelly Wallet To Go bags.



SAINT LAURENT

Monogram Kate Tassel Satchel

This mini bag boasts a compact size, making it perfect for everyday use or as a chic evening clutch. The iconic YSL logo is prominently displayed on the front flap, adding a touch of luxury.



Scan to shop all Kate Tassel bags.



JUDITH LEIBER

Minaudiere Clutch

Judith Leiber is known for her gorgeous “minaudieres” — essentially dainty clutches that pass as evening accessories and exude an ultra-feminine, evening wear-esque style.



Scan to shop all Minaudiere clutches.



VALENTINO GARAVANI

Rockstud Wallet on Chain

Introduced in 2010, the Rockstud motif has become a fundamental element of Valentino Garavani’s accessories collection, adorning a range of items including handbags, shoes, wallets, belts, and more.



Scan to shop all Rockstud Wallet on Chains.



LOUIS VUITTON

Petite Malle

In homage to the origins of Louis Vuitton, this little bag truly is a petite “malle” (which translates to trunk in French).



Scan to shop all Petite Malles.



BULGARI

Serpenti Forever Chain Wallet

The symbol of the serpent first appeared in Bulgari’s jewelry collection in the late 1940s. Now, it is reimagined in handbags by the renowned Italian brand.



Scan to shop all Serpenti Forever bags.



CHRISTIAN DIOR

Saddle Chain Long Wallet

As the name suggests, it’s a versatile wallet that doubles as a day-to-night bag, featuring a saddle-style crossover flap with a Dior “D” charm, and can be worn as a crossbody or a clutch.



Scan to shop all Saddle Chain wallets.





HERMES

Kelly Pochette Clutch

Hermes offers several different Kelly Pochette styles: the Kelly Pochette Clutch and the Kelly Cut Clutch Pochette. Both are great clutch options featuring the iconic Kelly top handle and turn-lock closure.



Scan to shop all Kelly Pochette Clutches.



CHANEL

Chain Top Handle Clutch

Small but mighty, this small bag makes a big splash. Hold it by its top handle or wear it as a crossbody.



Scan to shop all Chanel clutches.



BOTTEGA VENETA

The Pouch Chain

Ranking ‘It’ bag status, The Pouch became an instant sensation and street style accessory embodying the “no logo” trend. With the addition of the chain, The Pouch can also be worn over the shoulder.



Scan to shop all Pouch Chain clutches.



LOUIS VUITTON

Chain Louise

This bag is a timeless staple that complements any outfit. Its understated yet classic design makes it suitable for both daytime and evening wear.



Scan to shop all Chain Louise bags.



BOTTEGA VENETA

Slanted Clutch

This fun and shapely clutch crafted in Bottega Veneta's iconic Intrecciato weave is the perfect fit for a night out; it goes with any look and will definitely turn heads!



Scan to shop all
Slanted clutches.



ALEXANDER MCQUEEN

Knuckle Shoulder Bag

This chic bag is crafted of luxurious textiles and has a front flap featuring the signature Alexander McQueen skeletal knuckle embellishments.



Scan to shop all
Knuckle bags.



GUCCI

Horsebit Clutch

The horsebit symbol from Gucci, prominently featured on bags like the 1955 Shoulder Bag and the Horsebit Chain Clutch, epitomizes the brand and is experiencing a significant resurgence.



Scan to shop all
Horsebit clutches.



SAINT LAURENT

Loulou Puffer Pouch

The Loulou is one of Saint Laurent's most-known bags that carries timeless appeal and the Loulou Puffer is no exception.



Scan to shop all
Loulou pouches.



VALENTINO GARAVANI

Glam Lock Rockstud Flap

The Rockstud motif was created in 2010 and has since then become integral to Valentino Garavani's accessory line, spanning handbags, shoes, wallets, belts, and more.



Scan to shop
all Glam Locks.



CHANEL

Round Clutch With Chain

A fun shape from the timeless house of Chanel, this round clutch is the perfect accessory for a night out.



Scan to shop all
Round Clutches.



FENDI

Baguette

Since its inception in 1997, Fendi has introduced a plethora of diverse iterations of the Baguette. These include embellished, sequined, and embroidered designs, limited editions, 'DIY Baguette' kits, and customizable versions.



Scan to shop
all Baguettes.



HERMES

Jige Elan

A sleek and sophisticated piece, the Jige Elan clutch is known for its cross-over flap and a strap that tucks under a leather Hermes "H".



Scan to shop all
Jige Elan clutches.



VISIT US

Our locations are premier destinations for shopping and selling the most coveted handbags, jewelry, and watches.



Find a location:

fashionphile.com/locations



FASHIONPHILE

